

ELECTED OFFICIALS / DEPARTMENT MANAGERS



Jerry Cunningham
County Mayor



James Berrong
Sheriff



Roy Crawford, Jr.
County Clerk



Bill Dunlap
Highways



Scott Graves
Trustee



Thomas Hatcher
Circuit Court Clerk



Mike Morton
Property Assessor



Penny Whaley
Register of Deeds



David Bennett
Finance



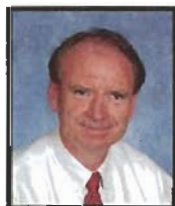
James Carroll
Clerk and Master



Jeff Caylor
Communications



Betsy Cunningham
Human Resources



Gary Ferguson
Environmental Health



Roger Fields
Building Commissioner



Mike Flynn
District Attorney



Fred Forster
Blount Partnership



Damon Fortney
Maintenance



Mack Garner
Public Defender



Jackie Glenn
Records Management



Dale Gourley
Juvenile Detention



Sandra Gregory
Soil Conservation



Judy Hackney
Purchasing Agent



Becky Harrall
Administrator of Elections



Scott Helton
Juvenile Court



John Herron
Information Technology



Alvin Hord
Director of Schools



Joe Huff
Parks & Recreation



Theresa Irwin
Drug Court Program



John Lamb
Planning



James McMillion
Agriculture Extension



Kathryn Pagles
Public Library



Micky Roberts
Health Department



Charles Staley
Veterans Affairs



Don Stallions
Risk Management



Justin Teague
Stormwater



Mathew Widner
Building Codes

BLOUNT COUNTY COMMISSION



Tonya Burchfield
DISTRICT 1
SEAT A



David Ballard, Jr.
DISTRICT 1
SEAT B



Brad Harrison
DISTRICT 2
SEAT A



Mike Lewis
DISTRICT 2
SEAT B



Steve Samples
DISTRICT 3
SEAT A



Joe McCulley
DISTRICT 3
SEAT B



Gary Farmer
DISTRICT 4
SEAT A



Mark Hasty
DISTRICT 4
SEAT B



Wendy Pitts Reeves
DISTRICT 4
SEAT C



Dr. Robert Ramsey
DISTRICT 5
SEAT A



Dr. Robert Proffitt
DISTRICT 5
SEAT B



Holden Lail
DISTRICT 6
SEAT A



Scott Helton
DISTRICT 6
SEAT B



Steve Hargis
DISTRICT 7
SEAT A



David Graham
DISTRICT 7
SEAT B



John Keeble
DISTRICT 8
SEAT A



Mike Walker
DISTRICT 8
SEAT B



Ronald French
DISTRICT 9
SEAT A



Monika Murrell
DISTRICT 9
SEAT B

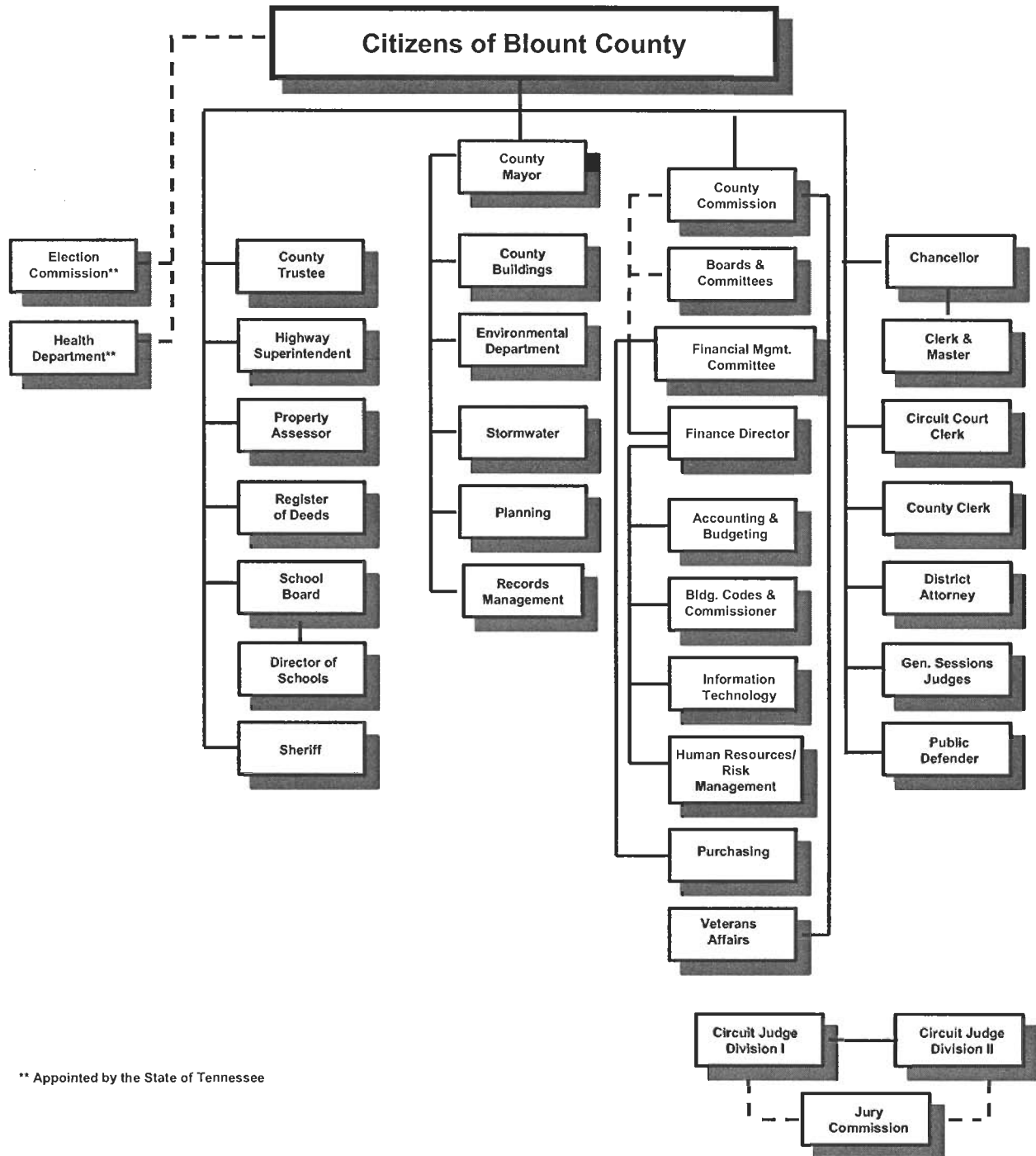


Gerald Kirby
DISTRICT 10
SEAT A



Kenneth Melton
DISTRICT 10
SEAT B

Blount County Organization Chart



** Appointed by the State of Tennessee

Personnel Schedule

(Full Time and Part Time Combined)

Fund Name	Department	2004-05 Actual	2005-06 Estimated	2006-07 Budget
General County	Commission	2.0	2.0	2.0
	County Mayor	4.0	4.0	4.0
	Human Resources	2.0	2.0	2.0
	Election Commission*	345.0	345.0	367.0
	Register of Deeds	11.0	11.0	11.0
	Planning	3.0	3.0	3.0
	Building Commission	1.5	1.5	1.5
	Building Codes Safety	0.0	0.0	3.0
	Stormwater	1.5	1.5	1.5
	County Buildings	14.0	16.0	16.0
	Records	2.0	2.0	2.0
	Risk Management	3.0	2.0	2.0
	Accounting/Budgeting	13.0	13.0	13.0
	Purchasing	6.0	6.0	6.0
	Property Assessor	13.0	13.0	14.0
	Reappraisal	5.0	6.0	7.0
	Trustee	11.0	11.0	11.0
	County Clerk	26.0	25.0	25.0
	Information Tech	8.0	8.0	8.0
	Circuit Court Clerk	47.0	48.0	48.0
	General Sessions	5.0	7.0	7.0
	Equity Division	1.0	1.0	1.0
	Clerk and Master	9.0	9.0	9.0
	Juvenile Court	7.0	7.0	7.0
	Public Defender	2.0	2.0	2.0
	Admin of Justice	6.0	6.0	6.0
	Sheriff's Office	41.0	41.0	42.0
	Highway Safety	13.0	13.0	13.0
	School Resource Officers	19.0	19.0	19.0
	Community Policing	21.0	21.0	21.0
	Victim Assistance	1.0	1.0	1.0
	Domestic Violence- State	1.0	1.0	1.0
	Domestic Violence-Federal	1.0	1.0	1.0
	Drug Enforcement	1.0	1.0	1.0
	Jail	119.0	121.0	121.0
	Juvenile Services	29.0	29.0	29.0
	Litter Control	2.0	2.0	2.0
	Emergency Management	2.0	2.0	2.0
	Local Health Center	7.0	7.0	7.0
	DGA Grant	10.0	13.0	14.0
Environmental Health	6.0	6.0	6.0	
Soil Conservation	2.0	2.0	2.0	
Veteran's Services	3.0	3.0	3.0	
	Sub-Total	826.0	835.0	864.0

<u>Public Library</u>	County Buildings	4.8	5.5	6.5
	Libraries	33.5	34.0	38.0
	Sub-Total	38.3	39.5	44.5
<u>Drug Court</u>	State	3.0	3.0	3.0
<u>Highway</u>	Administration	8.0	8.0	8.0
	Highway & Bridge Maintenance	54.0	54.0	54.0
	Operation & Maintenance of Equipment	13.0	13.0	13.0
	Sub-Total	75.0	75.0	75.0
<u>Schools</u>	Regular Instruction Program	582.5	600.5	610.0
	Special Education	161.0	163.0	168.0
	Career -Technical Ed	49.0	49.0	49.0
	Adult Ed	14.0	14.0	14.0
	Attendance	3.0	3.0	3.0
	Health Services	12.0	12.0	12.0
	Other Student Support	25.0	25.5	25.5
	Family Resource Center	1.0	1.0	1.0
	Regular Instruction	32.5	32.5	34.5
	Special Ed Program	9.0	9.0	9.0
	Career-Tech Administration	4.0	4.0	4.0
	Operation & Maintenance of Plant	106.5	106.5	112.5
	Adult Ed Administration	2.0	2.0	2.0
	Other Programs	4.0	4.0	4.0
	Board of Education	0.5	0.5	0.5
	Director of Schools	3.0	4.0	4.0
	Office of the Principle	76.0	78.0	81.0
	Fiscal Services	5.0	0.0	0.0
	Operation of Plant	90.0	90.0	95.0
	Maintenance of Plant	16.5	16.5	17.5
	Transportation	2.0	2.0	2.0
	Central and Other	7.5	7.5	7.5
	Food Service	146.0	146.0	146.0
	Blount County Extended School	58.6	63.7	66.3
	Sub-Total	1,410.6	1,434.2	1,468.3
	GRAND TOTAL	2,352.9	2,386.7	2,454.8

****This report is of Full-time and Part-time employees combined**

*** Fluctuates based on election years. Other change explanantions noted in various cost centers under "Budget Comments".**