

Blount County Dept. of Building Safety

2006 ICC EXTERIOR WALL LOCATION



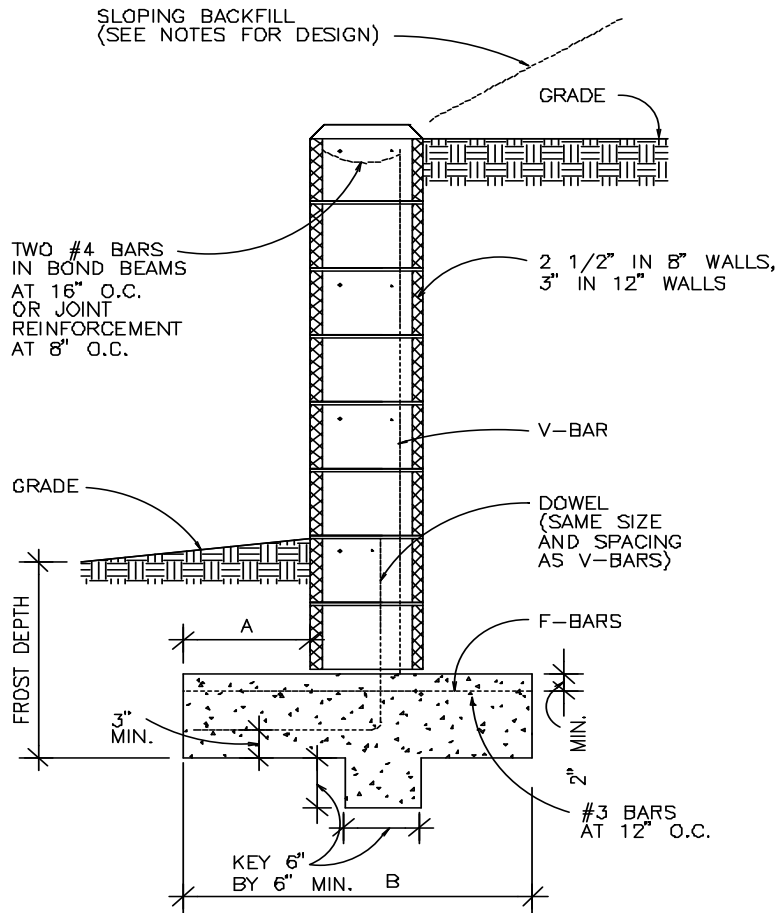
R302.1 Exterior walls. Construction, projections, openings and penetrations of exterior walls of dwellings and accessory buildings shall comply with Table R302.1. These provisions shall not apply to walls, projections, openings or penetrations in walls that are perpendicular to the line used to determine the fire separation distance. Projections beyond the exterior wall shall not extend more than 12 inches (305 mm) into the areas where openings are prohibited. Exceptions:

1. Detached tool sheds and storage sheds, playhouses and similar structures exempted from permits are not required to provide wall protection based on location on the lot. Projections beyond the exterior wall shall not extend over the lot line.
2. Detached garages accessory to a dwelling located within 2 feet (610 mm) of a lot line are permitted to have roof eave projections not exceeding 4 inches (102 mm).
3. Foundation vents installed in compliance with this code are permitted.

TABLE R302.1 EXTERIOR WALLS

	Exterior Wall Element	Minimum Fire Resistance Rating	Minimum Fire Separation Distance
Walls	(Fire-resistance rated)	1 hour with exposure from both sides	0 feet
	(Not fire-resistance rated)	0 hours	5 feet
Projections	(Fire-resistance rated)	1 hour on the underside	2 feet
	(Not fire-resistance rated)	0 hours	5 feet
Openings	Not allowed	N/A	< 3 feet
	25% Maximum of Wall Area	0 hours	3 feet
	Unlimited	0 hours	5 feet
Penetrations	All	Comply with Section R317.3	< 5 feet
		None required	5 feet

N/A=not applicable



DIMENSIONS AND REINFORCEMENT FOR CMU RETAINING WALLS

WALL	H	B	T	A	V-BARS	F-BARS
8"	3'-4"	2'-4"	9"	8"	#3 @ 32"	#3 @ 27"
	4'-0"	2'-9"	9"	10"	#4 @ 32"	#3 @ 27"
	4'-8"	3'-4"	10"	12"	#5 @ 32"	#3 @ 27"
	5'-4"	3'-8"	10"	14"	#4 @ 16"	#4 @ 30"
	6'-0"	4'-2"	12"	16"	#6 @ 24"	#4 @ 25"
12"	5'-4"	3'-8"	10"	14"	#4 @ 24"	#3 @ 25"
	6'-0"	4'-2"	12"	15"	#4 @ 16"	#4 @ 30"
	6'-8"	4'-6"	12"	16"	#6 @ 24"	#4 @ 22"
	7'-4"	4'-10"	12"	18"	#5 @ 16"	#5 @ 26"
	8'-0"	5'-4"	12"	20"	#7 @ 24"	#5 @ 21"
	8'-8"	5'-10"	14"	22"	#6 @ 8"	#6 @ 26"
	9'-4"	6'-2"	14"	24"	#8 @ 8"	#6 @ 21"

TYPICAL CANTILEVER RETAINING WALL