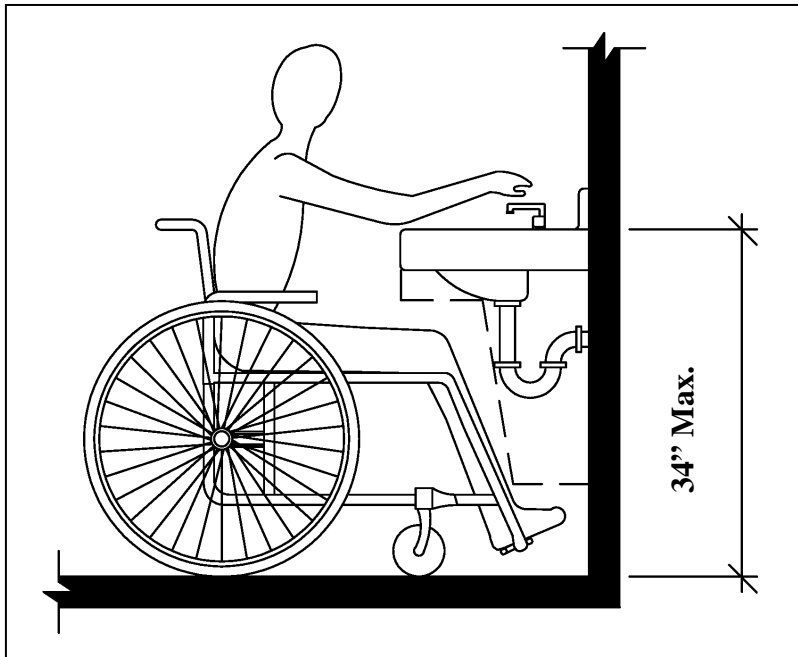


# Blount County Dept. of Building Safety 2006 Handicap Accessibility Information



Rev. 07102007



**606.6 Exposed Pipes and Surfaces.** Water supply and drainpipes under lavatories and sinks shall be insulated or otherwise configured to protect against contact. There shall be no sharp or abrasive surfaces under lavatories and sinks.

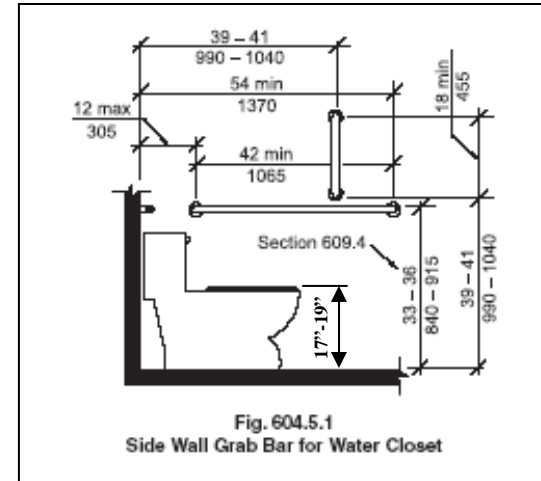
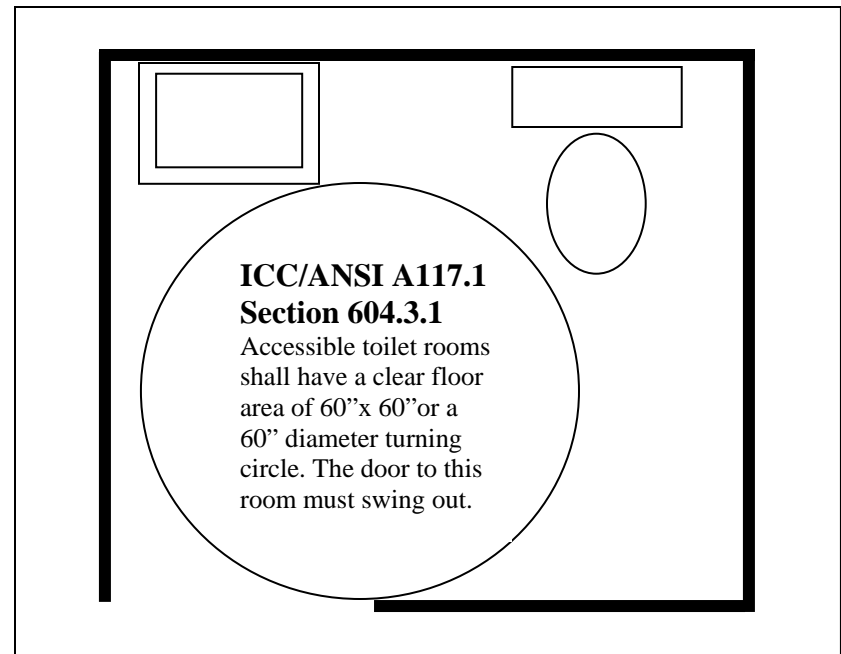


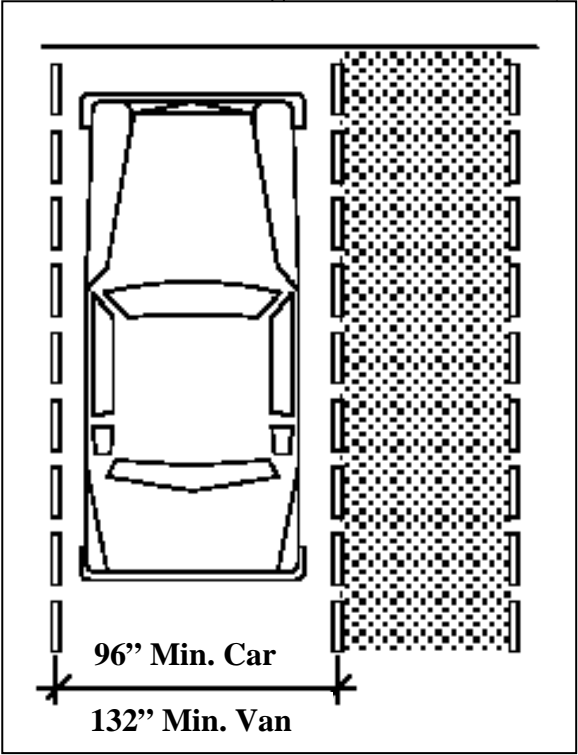
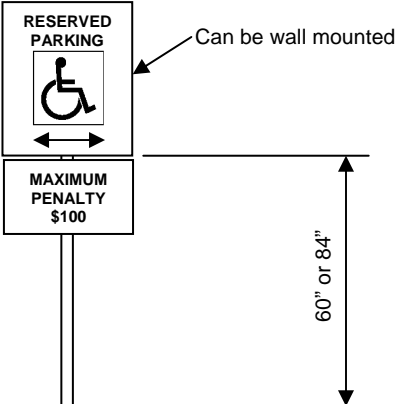
Fig. 604.5.1  
Side Wall Grab Bar for Water Closet



# Handicap Parking Information

TOTAL PARKING SPACES PROVIDED	REQUIRED MINIMUM NUMBER OF ACCESSIBLE SPACES
1 to 25	1
26 to 50	2
51 to 75	3
76 to 100	4
101 to 150	5
151 to 200	6
201 to 300	7
301 to 400	8
401 to 500	9
501 to 1,000	2% of total
1,001 and over	20, plus one for each 100, or fraction thereof, over 1,000

**TABLE 1106.1 ACCESSIBLE PARKING SPACES**



**EXAMPLE HANDICAP PARKING SPACE  
(FOR REFERENCE ONLY)**