

J1 HC PARKING DETAIL
SCALE: NOT TO SCALE

J3 HC PAVING SYMBOL AND SIGN
SCALE: NOT TO SCALE

GENERAL SITE CONDITIONS:

- OWNER OF RECORD LOT #1 - LARRY STORIE = 0.44 ACRES.
LOT #2 - LARRY STORIE = 0.31 ACRES
IRON PINS AT ALL CORNERS UNLESS OTHERWISE NOTED.
- SURVEY INFORMATION PREPARED BY:
MICHAEL OGLE
- ZONED COMMERCIAL C:
REQUIRED PARKING (2465 SF/200) = 12 PARKING SPACES
PROVIDED GENERAL 12
HANDICAP SPCS REQUIRED 1 PARKING SPACES
PROVIDED 1 PARKING SPACES
SETBACKS: FRONT (EXISTING) 30'
REAR SETBACK (EXISTING) 40' (RESIDENCIAL)
SIDE SETBACK (EXISTING) 10'

PROJECT

THE EXISTING CAR WASH FACILITY IS BEING CONVERTED TO A NEW LAUNDROMAT

- AN FACILITY ADDITION WILL BE ADDED (18' x 60') IN THE REAR TO ACCOMADATE THE FACILITY.
- THE ADDITION WILL BE PLACED OVER EXISTING PAVED AREA. THEREFORE NO ADDITIONAL STORMWATER WILL BE RELEASED.
- NEW WATER SUPPLY WATER AND SEWER WILL BE PLACED TO ACCOMADATE TO NEW FACILITY.
- NEW LIGHTING ARRANGEMENT SHALL BE PLACED AND NEW OUTLETS FOR EQUIPMENT SHALL BE PLACED.
- NEW PARKING LAYOUT INCLUDING HANDICAP PARKING AND ACCESSIBLE SIDE WALK WILL BE PLACED.

POWER - EXISTING, NEW OUTLETS AND LIGHTING
SEWER - EXISTING EXTERIOR, NEW INTERIOR
WATER - NEW INTERIOR PLUMBING
SPRINKLER - NONE
FIRE ALARM - NONE
STORM DRAINAGE - EXISTING

J8 PROJECT CONDITIONS AND NOTES
SCALE: NOT TO SCALE

LEGEND

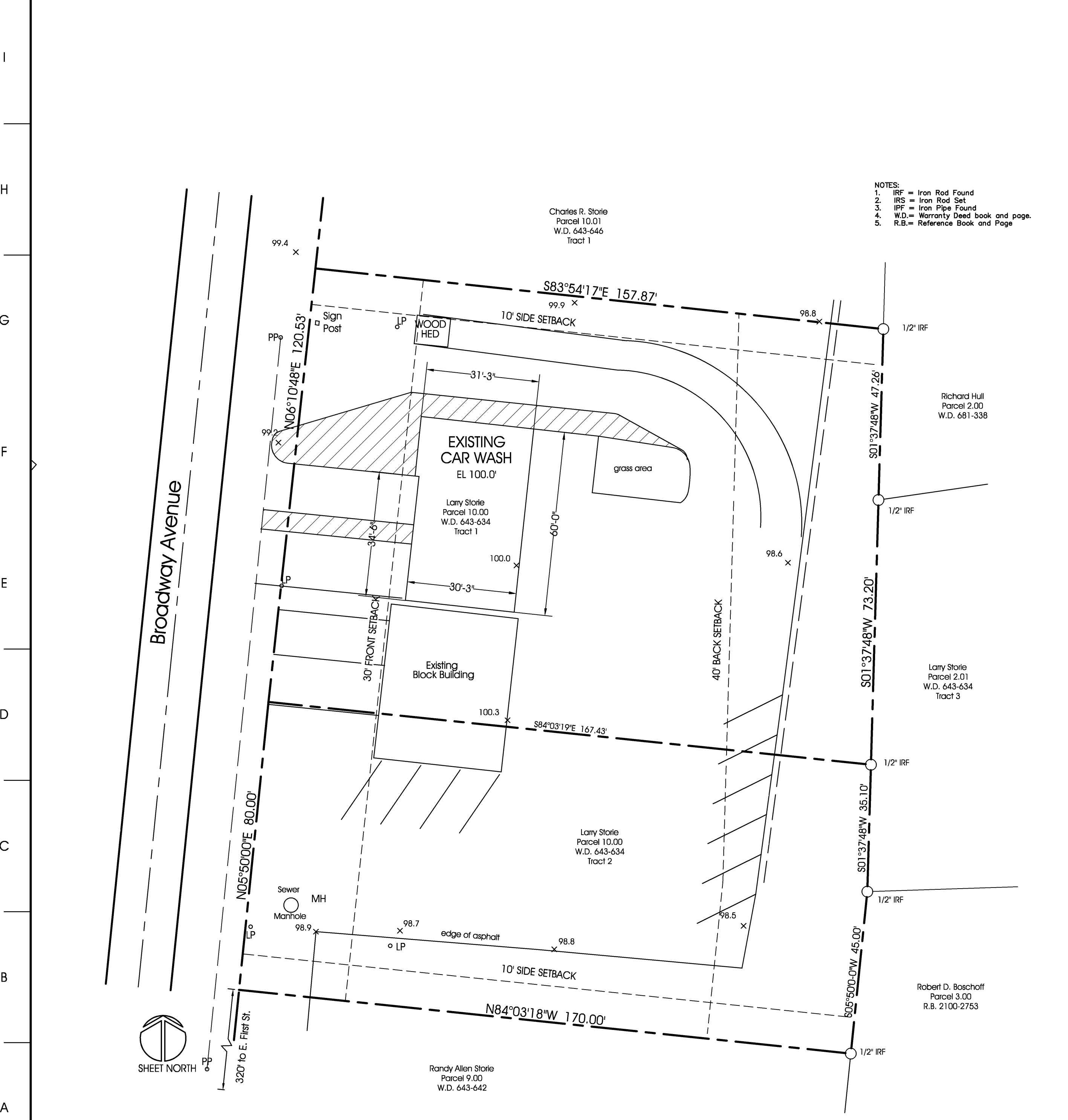
- LP LIGHT POLE
- CO CLEANOUT
- CB CATCH BASIN
- PP POWER POLE
- ⊗ FH FIRE HYDRANT
- LS LIGHT STANDARD
- MH MANHOLE
- ⊗ WM WATER METER
- ⊗ WV WATER VALVE
- ⊗ GM GAS METER
- ⊗ GV GAS VALVE
- TS TRAFFIC SIGNAL POLE
- OHU— OVERHEAD UTILITIES
- SS— SANITARY SEWER
- W— WATER LINE
- G— GAS LINE
- UE— UNDERGR ELECTRIC
- UP— UNDERGR TELEPHONE
- (O)— OLD MONUMENT
- (N)— NEW MONUMENT
- x— FENCE LINE
- PROPERTY LINE

SURVEY DATA

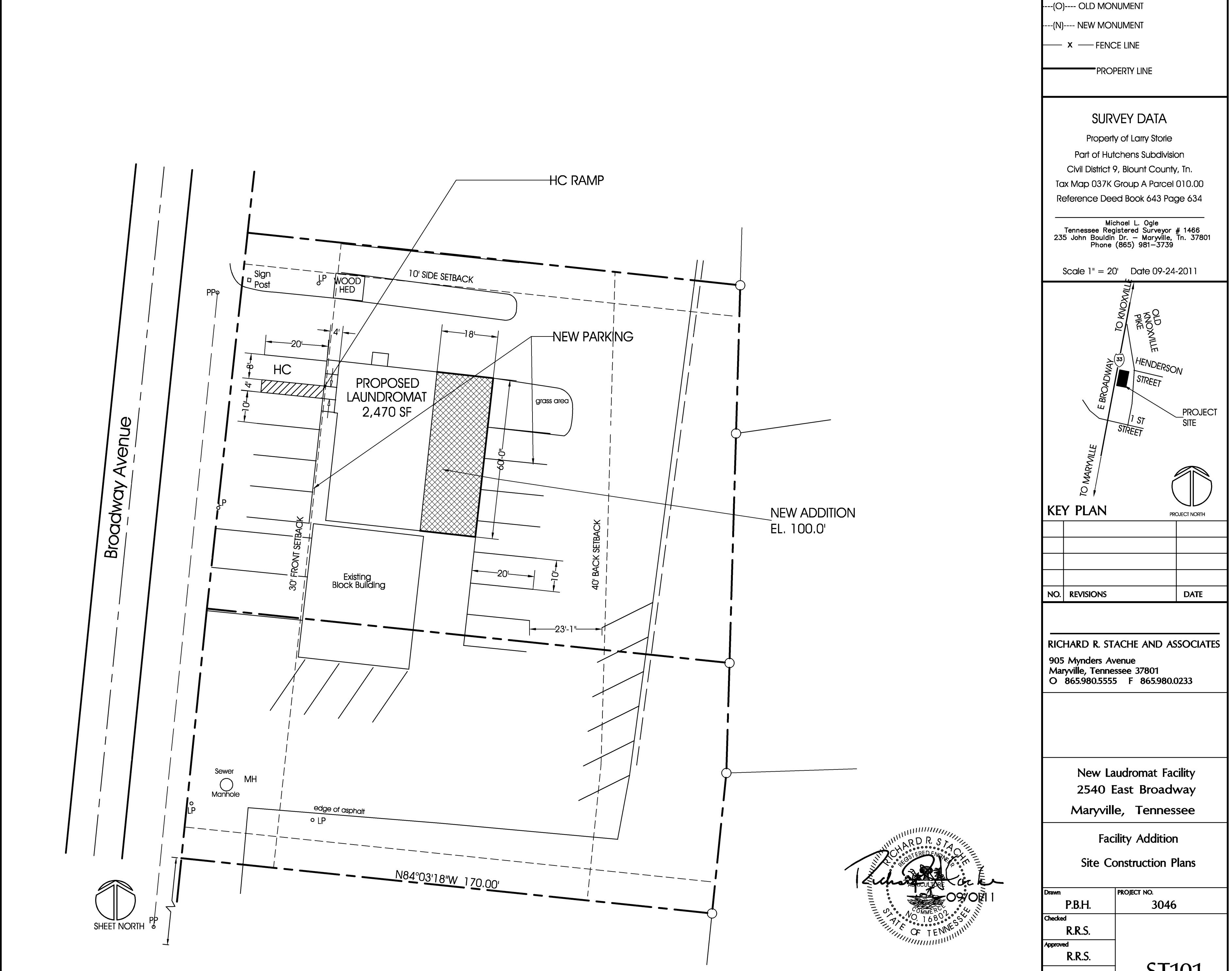
Property of Larry Storie
 Part of Hutchens Subdivision
 Civil District 9, Blount County, TN.
 Tax Map 037K Group A Parcel 010.00
 Reference Deed Book 643 Page 634

Michael L. Ogle
 Tennessee Registered Surveyor # 1466
 235 John Bouldin Dr. - Maryville, TN. 37801
 Phone (865) 981-3739

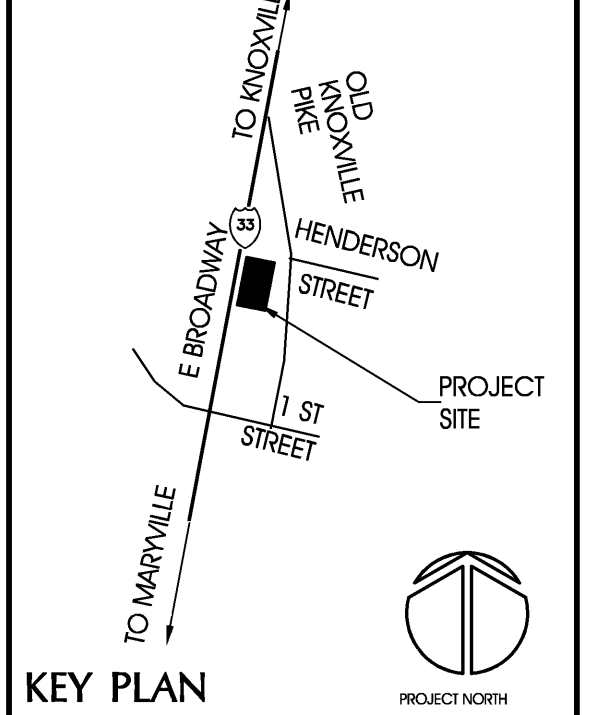
Scale 1" = 20' Date 09-24-2011



A1 EXISTING SITE PLAN
SCALE: 1"=20'-0"



A8 NEW SITE PLAN
SCALE: 1"=20'-0"



NO.	REVISIONS	DATE

RICHARD R. STACHE AND ASSOCIATES
 905 Mynders Avenue
 Maryville, Tennessee 37801
 O 865.980.5555 F 865.980.0233

New Laundromat Facility
 2540 East Broadway
 Maryville, Tennessee

Drawn	P.B.H.	PROJECT NO.	3046
Checked	R.R.S.	ST101	01 Sept 2011
Approved	R.R.S.		

